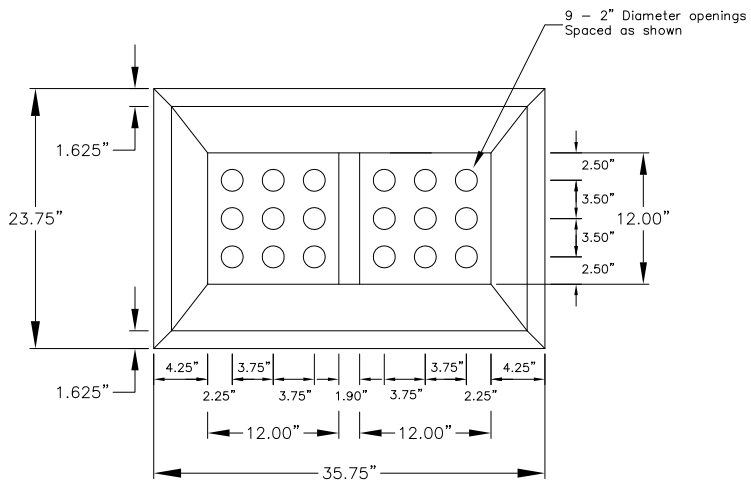
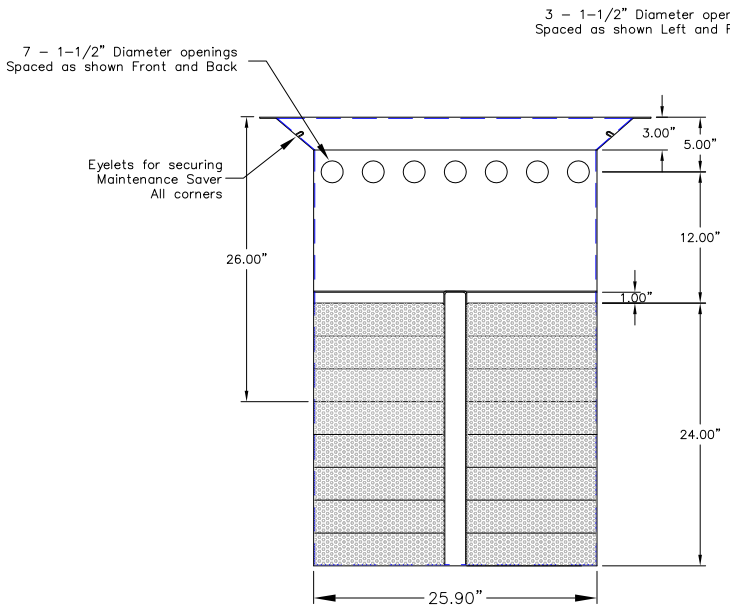


DRAWING TYPE PRINT

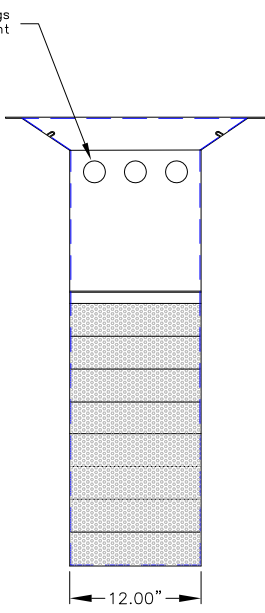
DESCRIPTION				DESIGN PROPOSAL FROM ABTECH INDUSTRIES			
FINISH		NONE		STD. TOLERANCE UNLESS OTHERWISE NOTED			
				.X TOL1		.XX TOL2	
				.XXX TOL3		FRAC. TOL4	
				ANG. TOL5			
MATERIAL SPECIFIED				APPLICATION			
316 STAINLESS STEEL				PROPOSED CATCH BASIN CONFIGURATION			
QTY.	ITEM NO.	PART NUMBER		DESCRIPTION			



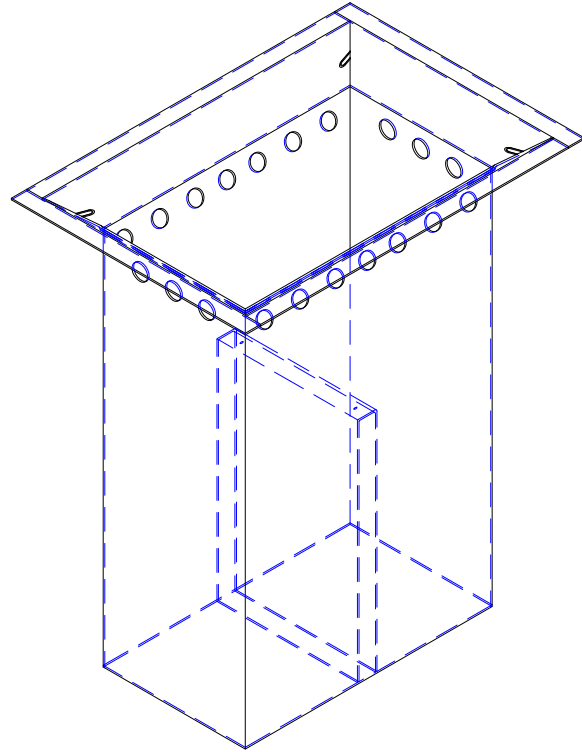
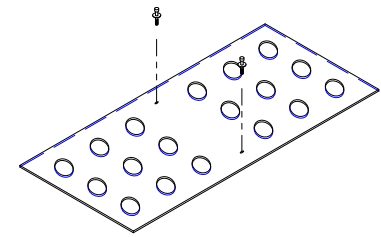
PLAN VIEW



ELEVATION VIEW



SIDE VIEW



ISOMETRIC—SMART PAK  
UNITS NOT SHOWN

- NOTES:
1. FABRICATE ALL PARTS FROM 10 GAUGE 316 STAINLESS STEEL
  2. DIMENSIONS IN INCHES
  3. CONSTRUCT ACCORDING TO ALL APPLICABLE ASTM STANDARDS FOR STEEL FABRICATION
  4. ALL WELDS TO BE COLD GALVANIZED PER ASTM STANDARDS
  5. UNIT DESIGNED TO FIT 16 - ABTECH SMART PAK MODEL SMPK-6



REV.	BY:	DATE:	DESCR.: PAWLEY'S ISLAND CATCH BASIN DETAILS 4138 INSERT - DEEP DEPTH
THIS DRAWING IS NOT TO SCALE THE BORDER IS SCALED UP SC TIMES TO FIT			DRAWN DATE <i>SMT</i> 12/21/09
			DWG.# PI - CBI 006A